

## 0.2m / 0.7ft Dual Polarized Antenna 40 Ghz

Our Product Introduction

for more products please visit us on [mw-antenna.com](http://mw-antenna.com)

### Basic Information

- Place of Origin: China
- Brand Name: Famous
- Certification: CE ISO9001
- Model Number: 0.2m/0.7ft Dual-Polarized Antenna
- Minimum Order Quantity: 1 SET
- Price: Negotiable
- Packaging Details: Standard export packaging/customizable packaging
- Payment Terms: T/T L/C



### Product Specification

- Name: Microwave Antenna
- Diameter Of Mounting Pole:  $\Phi 51 \sim \Phi 114$  Mm
- Fine Azimuth Adjustment: Coarse  $360^\circ$  Fine  $\pm 15^\circ$
- Fine Elevation Adjustment: Coarse  $\pm 25^\circ$  Fine  $\pm 15^\circ$
- Wind Velocity Operational: 180km/h
- Wind Velocity Survival: 250km/h
- Ice-load: 25.4 Mm
- Operational Temperature:  $-55 \sim +70$
- Highlight: 0.2m dual polarized antenna,  
0.7ft dual polarized antenna,  
dual polarized antenna 40 ghz



### More Images



### Product Description

0.2m/0.7ft Dual-Polarized Antenna

**Features:**

Optimized F/B & side-lobe suppression minimizes interference  
 Quick connect waveguide allows rapid change of polarization and installation  
 Installs in minutes to reduce service calls and installation time  
 Integrated handle / hoisting hook for added safety and convenient installation  
 Heavy-duty bracket with fine elevation and azimuth adjustment beamwidths

**Applications:**

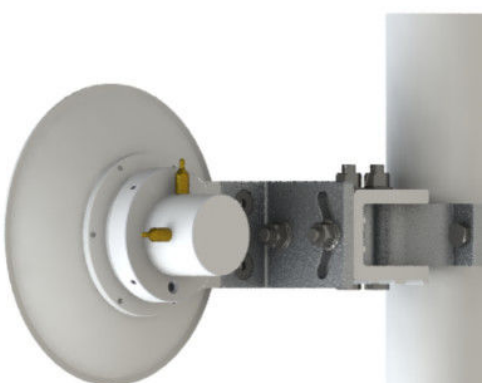
Wireless MIMO LAN systems & IEEE 802.11n applications  
 Point-to-point (PtP) for backhaul or client premise equipment (CPE)  
 High-density deployments requiring frequency reuse to achieve high capacity and data rates  
 Last-mile connection

**Electrical performance:**

Antenna Model	Antenna Size(m/ft)	Frequency (GHz)	Gain(dBi)			3dB BW (deg)	XPD (dB)	VSWR	F/B ratio (dB)	ISO
			Low	Mid	Top					
CMP0213DA	0.2m/0.7ft	12.2-13.25	26.2	26.6	26.9	7.3	30	1.3	52	35
CMP0215DA	0.2m/0.7ft	14.4-15.35	27.4	27.8	28.2	6.5	30	1.3	53	35
CMP0218DA	0.2m/0.7ft	17.7-19.7	29.5	29.9	30.3	5.1	30	1.3	56	35
CMP0223DA	0.2m/0.7ft	21.2-23.6	31.0	31.5	32.0	4.3	30	1.3	57	35
CMP0226DA	0.2m/0.7ft	24.2-26.5	32.2	32.6	33.0	3.8	30	1.3	58	35
CMP0228DA	0.2m/0.7ft	27.5-29.5	33.3	33.6	33.9	3.4	30	1.3	59	35
CMP0232DA	0.2m/0.7ft	31.8-33.4	34.6	34.8	35.0	3.0	30	1.3	60	35
CMP0238DA	0.2m/0.7ft	37.0-40.0	35.9	36.2	36.5	2.5	30	1.3	61	35

**Mechanical performance:**

Diameter of Mounting Pole	Φ51~Φ114 mm
Fine Azimuth Adjustment	Coarse 360° Fine ±15°
Fine Elevation Adjustment	Coarse ±25° Fine ±15°
Wind Velocity Operational	180km/h
Wind Velocity Survival Rating	250km/h
Ice-load	25.4 mm
Operational Temperature	-55~ +70





**Wuxi Famous Communication Equipment Co., Ltd.**



+86 13255118228



eric@mw-antenna.com



mw-antenna.com

Room 803, Wisdom Building, No. 18 Wisdom Road, Huishan Economic Development Zone, Huishan District,  
Wuxi City, Jiangsu Province, China