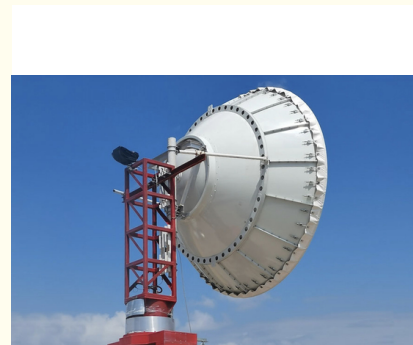


## 2.4m / 8ft Standard Dual Polarized Microwave Parabolic Antenna

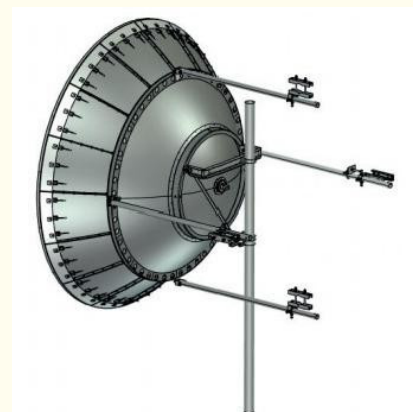
### Basic Information

- Place of Origin: China
- Brand Name: Famous
- Certification: CE ISO9001
- Model Number: XPD Antenna
- Minimum Order Quantity: 1 SET
- Price: Negotiable
- Packaging Details: Standard export packaging/customizable packaging
- Payment Terms: T/T L/C



### Product Specification

- Diameter Of Mounting Pole:  $\phi 114$  Mm
- Fine Azimuth Adjustment: Coarse  $360^\circ$  Fine  $\pm 5^\circ$
- Fine Elevation Adjustment: Fine  $\pm 5^\circ$
- Wind Velocity Operational: 180km/h
- Wind Velocity Survival: 200km/h
- Operational Temperature:  $-55 \sim +70$
- Highlight: **2.4m Microwave Parabolic Antenna,  
Dual Polarized Microwave Parabolic Antenna,  
8ft Dual Parabolic Antenna**



## Product Description

### 2.4m/8ft Standard Dual-Polarized Microwave Parabolic Antenna

- Our patent split-lobe microwave communication parabolic antenna for large diameter, which can save packaging and transportation costs greatly without any quality compromised
- High performance ultra high XPD parabolic antennas – Excellent performance for a wide range of applications
- Simple Assembly – Minimal required assembly simplifies installation on site and guarantees “factory-tested” quality

#### Electrical performance:

Antenna Model	Antenna Size(m/ft)	Frequency (GHz)	Gain(dBi)			3dB BW (degs)	XPD (dB)	VSWR	F/B radio dB)	ISO
			Low	Mid	Top					
CMP243DA	2.4m/8ft	3.6-4.2	36.1	37.3	38	2.4	30	1.15	62	35
CMP244DA	2.4m/8ft	4.4-5.0	38.0	38.8	39.3	2.0	30	1.15	63	35
CMP246WDA	2.4m/8ft	5.925-7.125	40.8	41.7	42.5	1.4	30	1.1	67	35
CMP247WDA	2.4m/8ft	7.125-8.5	42.5	43.3	44.0	1.1	30	1.1	69	35
CMP2410WDA	2.4m/8ft	10-11.7	45.5	46.1	46.8	0.8	30	1.1	71	35
CMP2413WDA	2.4m/8ft	12.2-13.25	47.5	47.7	47.9	0.7	30	1.1	72	35
CMP2415DA	2.4m/8ft	14.4-15.35	48.6	48.8	49.1	0.6	30	1.1	74	35

#### Mechanical performance:

Diameter of Mounting Pole	φ114 mm
Fine Azimuth Adjustment	Coarse 360°Fine±5°
Fine Elevation Adjustment	Fine±5°
Wind Velocity Operational	180km/h
Wind Velocity Survival	200km/h
Ice-load	25.4 mm
Operational Temperature	-55~+70

- 1.The low/mid/high gain has≤-0.5dBi tolerance is within the normal range;
- 2.F/Bradio:Denotes highest radiation relative to the main beam,at 180°±40°,across the band.Production antennas do not exceed rated values by more than 2 dB unless stated otherwise;





**Wuxi Famous Communication Equipment Co., Ltd.**



+86 13255118228



eric@mw-antenna.com



mw-antenna.com

Room 803, Wisdom Building, No. 18 Wisdom Road, Huishan Economic Development Zone, Huishan District,  
Wuxi City, Jiangsu Province, China