

2.4m/8ft High XPD Dual Polarized Microwave Parabolic Antenna 5 Ghz

Our Product Introduction

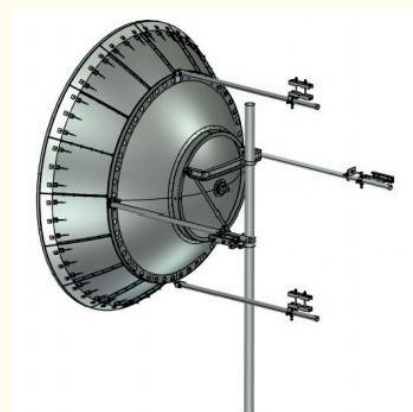
Basic Information

- Place of Origin: China
- Brand Name: Famous
- Certification: CE ISO9001
- Model Number: XPD Antenna
- Minimum Order Quantity: 1 SET
- Price: Negotiable
- Packaging Details: Standard export packaging/customizable packaging
- Payment Terms: T/T L/C



Product Specification

- Diameter Of Mounting Pole: $\phi 114$ Mm
- Fine Azimuth Adjustment: Coarse 360° Fine $\pm 5^\circ$
- Fine Elevation Adjustment: Fine $\pm 5^\circ$
- Wind Velocity Operational: 180km/h
- Wind Velocity Survival: 200km/h
- Operational Temperature: $-55 \sim +70$
- Highlight: **Dual Polarized High XPD Antenna, 2.4m Parabolic Antenna 5 Ghz, 8ft Microwave Parabolic Antenna**



for more products please visit us on mw-antenna.com

Product Description

2.4m/8ft High XPD Dual-Polarized Microwave Parabolic Antenna

The XPD Antenna, short for Cross-Polarization Discrimination Antenna, is a specialized type of antenna known for its ability to reduce interference and improve signal clarity by minimizing cross-polarization interference. This type of antenna is designed to separate and distinguish between vertically and horizontally polarized signals, allowing for better discrimination and isolation of desired signals while rejecting unwanted interference.

- Our patent split-lobe microwave communication parabolic antenna for large diameter, which can save packaging and transportation costs greatly without any quality compromised
- High performance ultra high XPD parabolic antennas – Excellent performance for a wide range of applications
- Simple Assembly – Minimal required assembly simplifies installation on site and guarantees “factory-tested” quality

Electrical performance:

Antenna Model	Antenna Size(m/ft)	Frequency (GHz)	Gain(dBi)			3dB BW (deg)	XPD (dB)	VSWR	F/B radio (dB)	ISO
			Low	Mid	Top					
CMP243DB	2.4m/8ft	3.6-4.2	36.1	37.3	38	2.4	33	1.15	62	38
CMP244DB	2.4m/8ft	4.4-5.0	38.0	38.8	39.3	2.0	33	1.15	63	38
CMP246WDB	2.4m/8ft	5.925-7.125	40.8	41.7	42.5	1.4	33	1.1	67	38
CMP247WDB	2.4m/8ft	7.125-8.5	42.5	43.3	44.0	1.1	33	1.1	69	38
CMP2410WDB	2.4m/8ft	10-11.7	45.5	46.1	46.8	0.8	33	1.1	71	38
CMP2413WDB	2.4m/8ft	12.2-13.25	47.5	47.7	47.9	0.7	33	1.1	72	38
CMP2415DB	2.4m/8ft	14.4-15.35	48.6	48.8	49.1	0.6	33	1.1	74	38

Mechanical performance:

Diameter of Mounting Pole	φ114 mm
Fine Azimuth Adjustment	Coarse 360°Fine±5°
Fine Elevation Adjustment	Fine±5°
Wind Velocity Operational	180km/h
Wind Velocity Survival	200km/h
Ice-load	25.4 mm
Operational Temperature	-55~+70

1. The low/mid/high gain has≤0.5dBi tolerance is within the normal range;
2. F/B radio: Denotes highest radiation relative to the main beam, at 180°±40°, across the band. Production antennas do not exceed rated values by more than 2 dB unless stated otherwise;



