

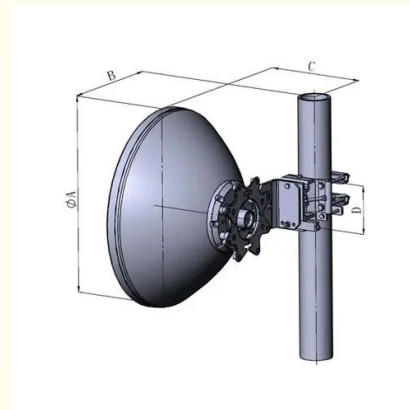


## 3.7m/12ft High XPD Performance Dual Polarized Microwave Parabolic Antenna 48dbi

Our Product Introduction

### Basic Information

- Place of Origin: China
- Brand Name: Famous
- Certification: CE ISO9001
- Model Number: XPD Antenna
- Minimum Order Quantity: 1 SET
- Price: Negotiable
- Packaging Details: Standard export packaging/customizable packaging
- Payment Terms: T/T L/C



### Product Specification

- Diameter Of Mounting Pole:  $\phi 114$  Mm
- Fine Azimuth Adjustment: Coarse  $360^\circ$  Fine  $\pm 5^\circ$
- Fine Elevation Adjustment: Fine  $\pm 5^\circ$
- Wind Velocity Operational: 180km/h
- Wind Velocity Survival: 200km/h
- Ice-load: 25.4 Mm
- Operational Temperature:  $-55 \sim +70$
- Highlight: **High XPD Performance parabolic antenna 48 dbi  
, 12ft parabolic antenna 48dbi,  
3.7m Microwave Parabolic Antenna**

for more products please visit us on [mw-antenna.com](http://mw-antenna.com)

## Product Description

### 3.7m/12ft High XPD Performance Dual-Polarized Microwave Parabolic Antenna

- Our patent split-lobe microwave communication parabolic antenna for large diameter, which can save packaging and transportation costs greatly without any quality compromised
- High performance ultra high XPD parabolic antennas – Excellent performance for a wide range of applications
- Simple Assembly – Minimal required assembly simplifies installation on site and guarantees “factory-tested” quality

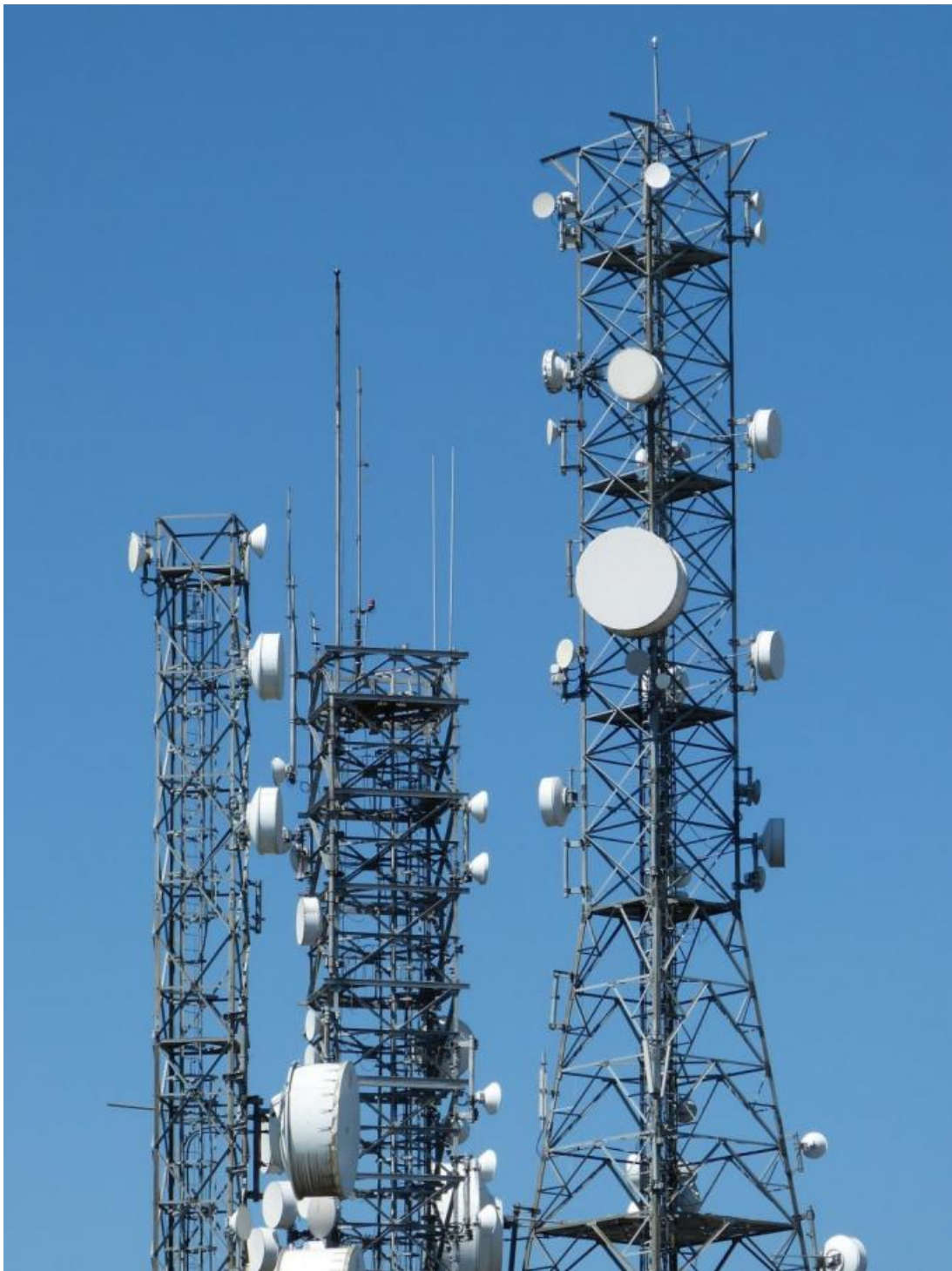
#### Electrical performance:

Antenna Model	Antenne Size(m/ft)	Frequency (GHz)	Gain(dBi)			3dB BW (deg)	XPD (dB)	VSW R	F/B radio (dB)	ISO
			Lo W	Mid	Top					
CMP373 DB	3.7m/12ft	3.6-4.2	40.1	40.9	41.4	1.6	33	1.15	66	38
CMP374 DB	3.7m/12ft	4.4-5.0	41.6	42.2	42.7	1.2	33	1.15	67	38
CMP376 WDB	3.7m/12ft	5.925-7.125	44.4	45.2	46.0	1	33	1.1	71	38
CMP377 WDB	3.7m/12ft	7.125-8.5	46.0	46.8	47.5	0.8	33	1.1	73	38
CMP3710 WDB	3.7m/12ft	10-11.7	48.4	49.4	50.3	0.6	33	1.1	75	38

#### Mechanical performance:

Diameter of Mounting Pole	Φ114 mm
Fine Azimuth Adjustment	Coarse 360° Fine ±5°
Fine Elevation Adjustment	Fine ±5°
Wind Velocity Operational	180km/h
Wind Velocity Survival	200km/h
Ice-load	25.4 mm
Operational Temperature	-55~ +70

- 1.The low/mid/high gain has≤-0.5dBi tolerance is within the normal range;
- 2.F/Bradio:Denotes highest radiation relative to the main beam,at 180°±40°,across the band.Production antennas do not exceed rated values by more than 2 dB unless stated otherwise;



**Wuxi Famous Communication Equipment Co., Ltd.**

+86 13255118228

eric@mw-antenna.com

mw-antenna.com

Room 803, Wisdom Building, No. 18 Wisdom Road, Huishan Economic Development Zone, Huishan District,  
Wuxi City, Jiangsu Province, China