



## High Performance Microwave Horn Antenna For Communication Needs

Our Product Introduction

for more products please visit us on [mw-antenna.com](http://mw-antenna.com)

### Basic Information

- Place of Origin: China
- Brand Name: Famous
- Certification: CE ISO9001
- Model Number: Horn Antenna
- Minimum Order Quantity: 1 SET
- Price: Negotiable
- Packaging Details: Standard export packaging/customizable packaging
- Payment Terms: T/T L/C



### Product Specification

- Name: Symmetrical Horn Antenna
- Frequency Range: 4900-7200 MHz
- Gain: 18 DBi
- Azimuth Beam Width: 90°
- Elevation Beam Width: 25°
- Front-to-Back Ratio: 40 DB
- Isolation: >30 DB
- VSWR Max: 1.6
- Connector: RP-SMA Male Pigtails
- Highlight: **High Performance Microwave Horn Antenna , Microwave Horn Antenna For Communication Needs , 4900-7200 MHz Symmetrical Horn Antenna**



### More Images



## Product Description

### High-Performance Microwave Horn Antenna For Communication Needs

#### Application

**Communication Systems:** Symmetrical Horn Antennas are commonly used in wireless communication systems such as Wi-Fi networks, cellular mobile communication networks (e.g., 4G, 5G), and microwave communication systems. They can be used for data transmission, voice communication, video streaming, and other communication needs.

**Radar Systems:** In radar systems, Symmetrical Horn Antennas are utilized for transmitting and receiving radar signals. They find extensive use in aviation, maritime, military, and meteorological radar systems.

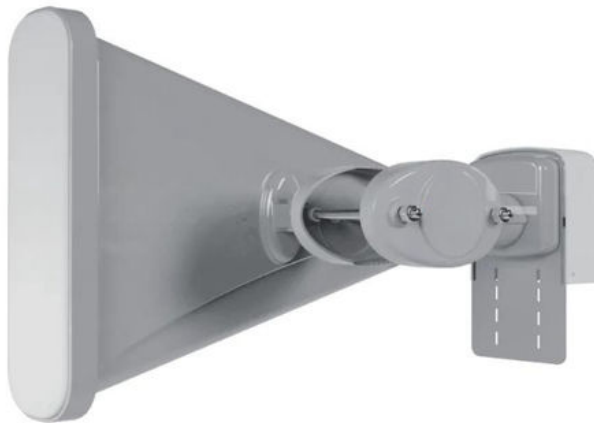
**Wireless Sensor Networks:** Symmetrical Horn Antennas are suitable for various wireless sensor networks (WSNs) used in applications such as environmental monitoring, smart home systems, industrial automation, etc. They facilitate effective data communication and information exchange between sensor nodes.

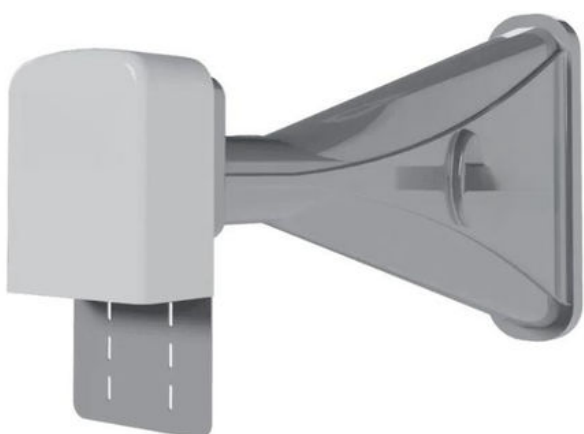
**Satellite Communication:** Symmetrical Horn Antennas are also employed in satellite communication systems, including ground stations and satellite communication terminals. They provide stable and efficient satellite signal reception and transmission capabilities.

**RF Testing and Measurement:** In the field of RF testing and measurement, Symmetrical Horn Antennas are used to assess device performance, measure signal strength and quality, and perform RF spectrum analysis.

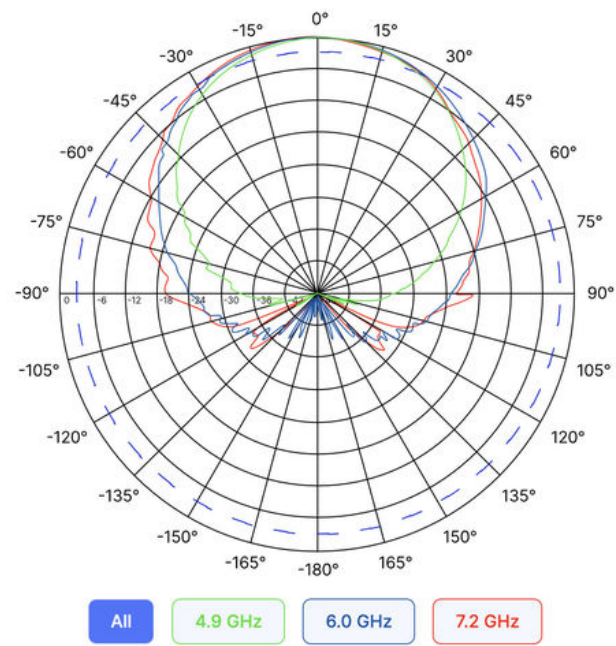
**Wireless Video Transmission:** Symmetrical Horn Antennas are also used in wireless video transmission systems such as surveillance cameras, video conferencing systems, and broadcasting TV systems. They ensure stable and high-quality video signal transmission.

Name:	Symmetrical Horn Antenna	Frequency Range:	4900-7200 MHz
Gain:	18 DBi	Azimuth Beam Width:	90°
Elevation Beam Width:	25°	Front-to-Back Ratio:	40 DB
Isolation:	>30 DB	VSWR Max:	1.6
Connector:	RP-SMA Male Pigtails		





Antenna Pattern



Antenna Radiation Pattern Polar Plot

