



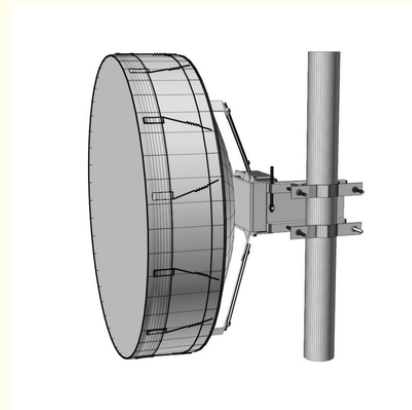
## 0.9 Meter / 3 Feet Standard Microwave Parabolic Antenna In Telecommunications

Our Product Introduction

for more products please visit us on [mw-antenna.com](http://mw-antenna.com)

### Basic Information

- Place of Origin: China
- Brand Name: Famous
- Certification: CE ISO9001
- Model Number: Microwave Parabolic Antenna
- Minimum Order Quantity: 1 SET
- Price: Negotiable
- Packaging Details: Standard export packaging/customizable packaging
- Payment Terms: T/T L/C



### Product Specification

- Name: Microwave Parabolic Antenna
- Diameter Of Mounting Pole:  $\phi 114$  Mm
- Fine Azimuth Adjustment: Coarse 360° Fine  $\pm 15^\circ$
- Fine Elevation Adjustment: Fine  $\pm 10^\circ$
- Wind Velocity Operational: 180km/h
- Wind Velocity Survival Rating: 250km/h
- Ice-load: 25.4 Mm
- Operational Temperature:  $-55 \sim +70$
- Highlight: Telecommunications microwave parabolic antenna  
, 3 Feet microwave parabolic antenna,  
0.9 Meter high gain parabolic antenna



### More Images



## Product Description

### 0.9m/3ft Standard Dual-Polarized Antenna

the Microwave Parabolic Antenna combines high-gain design, focused signal transmission, broadband capability, weather-resistant construction, and versatile deployment options to deliver unmatched long-range connectivity. Whether in telecommunications, broadcasting, or satellite communication, this antenna stands as a reliable and essential component in modern communication infrastructures.

#### Features:

Stable gain over ultra-wide bandwidth

Comes pre-assembled from the factory for quickest time to tower

Includes radome ensuring robust and reliable performance under the most challenging condition

Optimized F/B & side-lobe suppression minimizes interference

Installs in minutes to reduce service calls and installation time

Heavy-duty bracket with fine elevation and azimuth adjustment

Heavy-duty hardware survives 250Km/h wind speeds

#### Electrical performance:

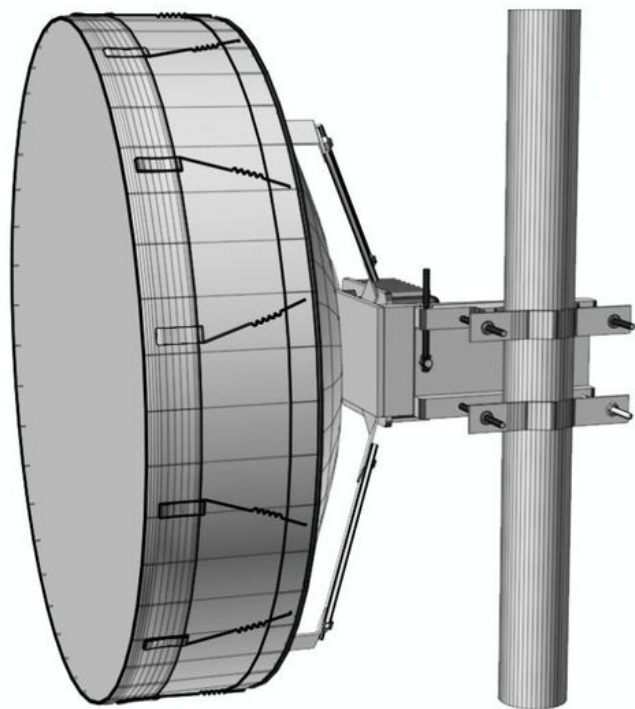
Antenna Model	Antenna Size(m)	Frequency (GHz)	Gain(dBi)			3dB BW (degs)	XPD (dB)	VSWR	F/B ratio (dB)	ISO
			Low	Mid	Top					
CM09U6WD	0.9	5.925-7.125	32.7	33.5	34.3	3.6	30	1.3	58	35
CM09U7WD	0.9	7.125-8.5	34.3	35.1	35.8	2.8	30	1.3	59	35
CM09U10WD	0.9	10.125-11.7	37.0	38.0	38.6	2.0	30	1.3	63	35
CM09U13D	0.9	12.75-13.25	39.3	39.5	39.7	1.7	30	1.3	64	35
CM09U15D	0.9	14.4-15.35	40.4	40.7	41	1.5	30	1.3	59	35
CM09U18D	0.9	17.7-19.7	42.2	42.7	43.1	1.2	30	1.3	68	35
CM09U23D	0.9	21.2-23.6	43.7	44.2	41.1	1.0	30	1.3	69	35
CM09U26D	0.9	24.2-26.5	44.9	45.3	45.7	0.9	30	1.3	70	35

#### Mechanical performance:

Diameter of Mounting Pole	Φ114 mm
Fine Azimuth Adjustment	Coarse 360° Fine ±15°
Fine Elevation Adjustment	Fine ±10°
Wind Velocity Operational	162km/h
Wind Velocity Survival Rating	250km/h
Ice-load	25.4 mm
Operational Temperature	-45 ~ +65

1.The low/mid/high gain has≤-0.5dBi tolerance is within the normal range;

2.F/Bradio:Denotes highest radiation relative to the main beam,at 180°±40°,across the band.Production antennas do not exceed rated values by more than 2 dB unless stated otherwise;





**Wuxi Famous Communication Equipment Co., Ltd.**

+86 13255118228

eric@mw-antenna.com

mw-antenna.com

Room 803, Wisdom Building, No. 18 Wisdom Road, Huishan Economic Development Zone, Huishan District,  
Wuxi City, Jiangsu Province, China